



Spot Commodity

Europe Warehouse



HIGH VOLTAGE STACK BATTERY

9.6kWh-25.6kWh

Energy-Core

Enershare Battery Core

Up to 6 towers in parallel

From 9.6 kWh to 153.6 kWh

Enershare Tech Company Limited

Tel: 0086-755-28748610 E-mail: wesleyyan@enershare.cn

<https://www.enershare.cn>

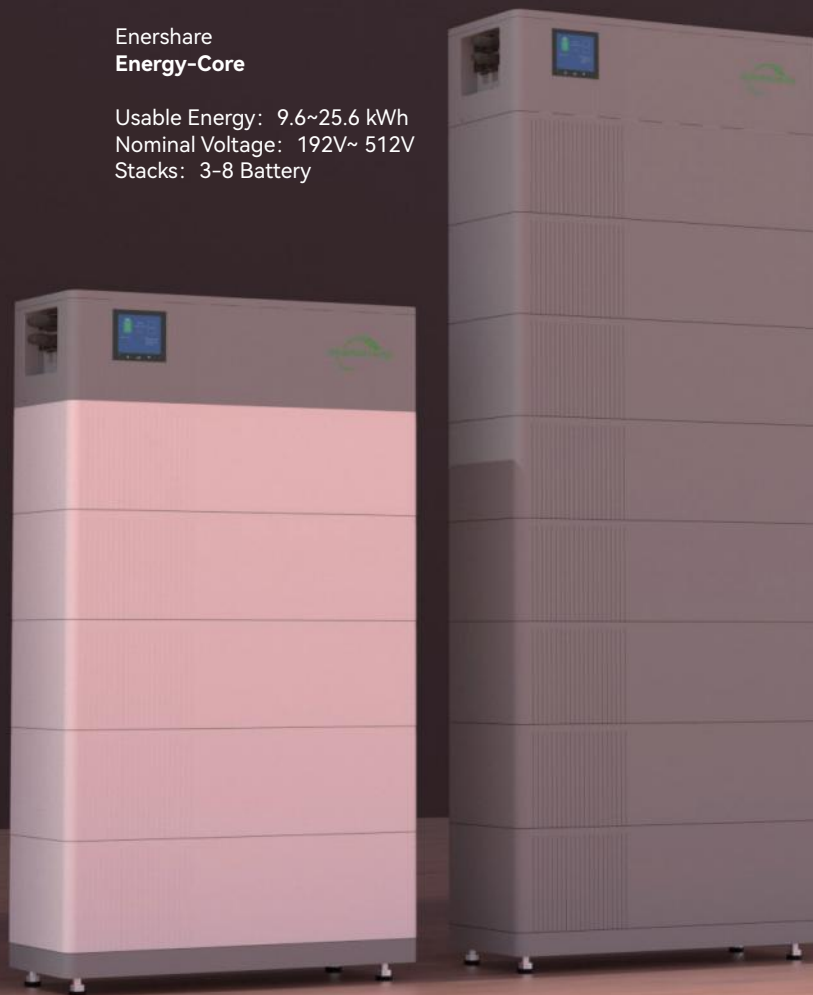
The Enershare Battery Core Series

Enershare Battery Core Series, Sparkling With Innovation, Provides You With Intelligent Integration Storage Solutions. They Can Handle Up To A Voltage Of 600 V Sharing Our Minted Smart BMS .

Enershare Battery Core Series Will Inaugurate a New Era In The Residential Energy Storage Industry.

Enershare Energy-Core

Usable Energy: 9.6~25.6 kWh
Nominal Voltage: 192V~ 512V
Stacks: 3-8 Battery



Smart System Design

- LFP Chemistry
- Automatic Inverter Configuration (set-up free)
- Automatic Battery System Configuration (set-up free)
- Intelligent Display (Key Info, Err code, SOC)
- Power and Energy for all applications
- 1 and 3 phase, on / off grid / back up support
- No DC/DC, high efficiency system layout
- Up to 6 towers in parallel



Smart Installation Design

- Stackable Design, Easy Installation, $\leq 36.5\text{kg}$ / Stack
- Slim and Compact
- Plug-Play (Direct Connect RJ45)
- Aluminum Housing
- IP65 Protection

Enershare Energy-Core is an energy type with a capacity of 3.2 kWh, 64 V in Each Battery Stack.

Smart BMS



Operating Voltage Range	120-600V
Max Output Current	30 A
Peak Output Current	50 A (5s)
Communication	CAN 2.0/ RS485
Dimensions (H/W/D)	175* 650* 260 mm
Weight	≤ 20 kg



Battery	Energy-Core
Usable Energy	3.2 kWh
Rated Capacity	50Ah
Battery Cell Technology	LFP
Operation Temperature	-10~55 ° C
Nominal Voltage	64 V
Operating Voltage Range	54~73 V
Max Output Current	30 A
Peak Output Current	50 A (5s)
Dimensions (H/W/D)	175* 650* 260 mm
Weight	≤ 36.5 kg



Enershare Tech Company Limited

Tel: 0086-755-28748610 E-mail: wesley.yan@enershare.cn
<https://www.enershare.cn>

Stackable

Up to 3-8 battery 9.6kWh-25.6kWh

Increase the capacity freely in lifetime It grows as your family grows

LCD Screen

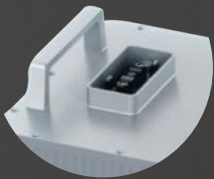


Smart BMS



Invisible Handles

Aluminum Case



Battery Stacks

Base & Legs

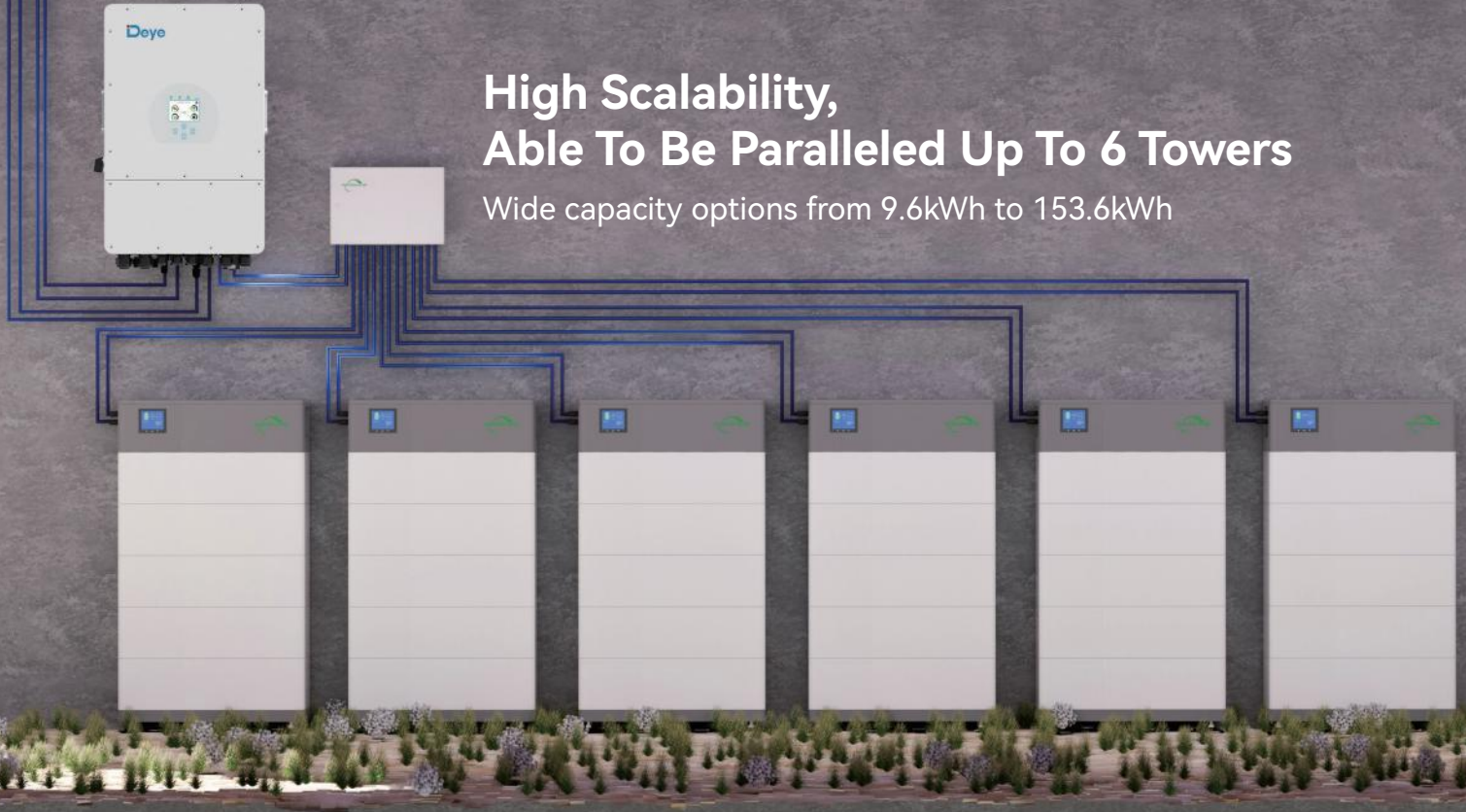
Stackable battery units with direct connection
No additional Wires, No additional Screws

1 Person Work
Time saving, Cost Saving

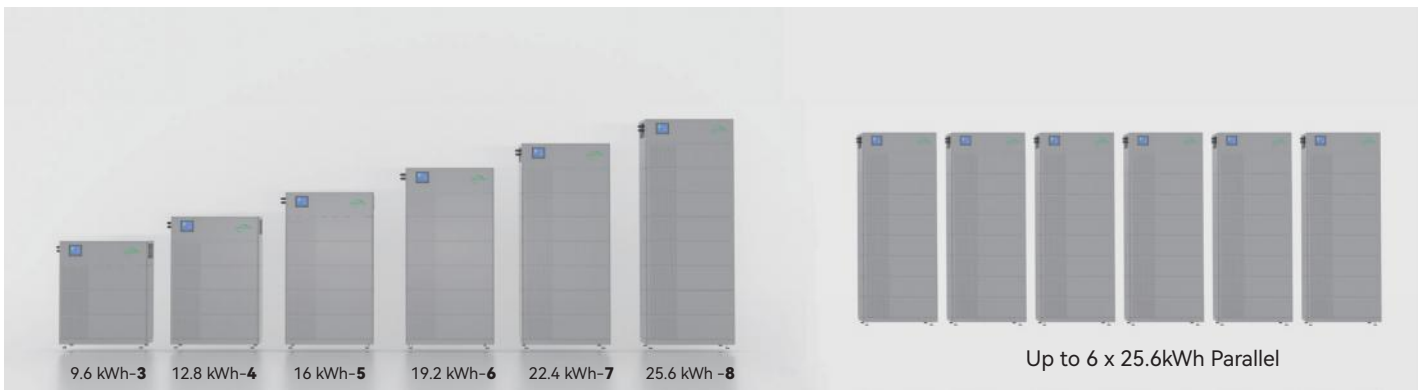


High Scalability, Able To Be Paralleled Up To 6 Towers

Wide capacity options from 9.6kWh to 153.6kWh



Enershare Energy-Core

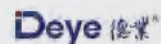
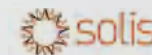


Enershare Energy-Core 9.6KWh-25.6KWh High Voltage Stack Battery



Technical Specification

Number of Stacks	3	4	5	6	7	8
Usable Energy	9.6 kWh	12.8 kWh	16 kWh	19.2 kWh	22.4 kWh	25.6 kWh
Max Output Current	30 A					
Peak Output Current	50 A (5s)					
Nominal Voltage	192 V	256 V	320 V	384 V	448 V	512 V
Operating Voltage Range	162~219 V	216~292 V	270~365 V	324~438 V	378~511 V	432~584 V
Scalability	Up to 6 towers in parallel (From 9.6 kWh to 153.6 kWh)					
Dimensions (H*W*D) (mm)	800* 650*260 mm	975* 650*260 mm	1150* 650*260 mm	1325* 650*260 mm	1500* 650*260 mm	1675* 650*260 mm
Weight	129.5 kg	166 kg	202.5 kg	239 kg	275.5 kg	312 kg
Operation Temperature	-10~55 °C					
Protection Rating	IP65					
Round-trip Efficiency	≥ 96 %					
Certification & Compliance	UKCA / IEC62619 / VDE / CE / UN38.3					
Applications	ON Grid / ON Grid Backup / OFF Grid					
Warranty	10 Years					



Set up Free

Instantly functioning after installation,
No App, No laptop commissioning

Automatic recognition between systems





Enershare Battery Core Series Battery Compatible Inverter List V1.5

Inverter		Stack Quantity		Minimum Firmware Version	
		Power-Core	Energy-Core	Inverter	Battery Core
				BMS	
SunGrow	SH 3.0/3.6/4.0/5.0/6.0 RS	2-3	3-6	≥ ARM: SUNSTONE-H_01011.02.30 ≥ MDSP: SUNSTONE-H_03011.02.26	≥ V1.6-1.5
	SH 5.0/ 6.0/8.0/10 RT	2-5	3-8	≥ ARM: SAPPHIRE-H_01011.71.21 ≥ MDSP: SAPPHIRE-H_03011.71.19	
GoodWe	ET (5-10kW)	2-5	4-8	≥ ARM 13	≥ V1.6-1.5
	BT	2-5	4-8	≥ ARM 13	
	EH/BH	2-3	3-6	≥ ARM 07	
	EHB	2-4	3-6	≥ ARM 03	
Notice: For the inverter which was manufactured before March 6th 2023, if meet the communication issue while installing, please contact the service of Goodwe for help.					
Solis	S6-EH3P(3-10)K-H	2-5	3-8	≥ V02	≥ V1.6-1.5
Deye	SUN-(5-20)K-SG01HP3-EU-AM2	2-5	3-8	≥ 2001-C01B	≥ V1.6-1.5
Solinteg	MHS-3-8K	2-5	3-8		≥ V1.6-1.5
	MHT-4-20K	2-5	3-8		
hoymiles	HYT-(5.0-12.0)HV-EUG1	2-5	3-8	≥ V01.00.06	≥ V1.8-1.5
	HAT-(5.0-10.0)HV-EUG1	2-5	3-8	≥ V01.00.06	
Afore	AF3-20K-TH	2-5	3-8		≥ V1.8-1.5
	AF3-20K-MTH				

Note:

1. Maximum 6 Systems In Parallel Connection. For Parallel Connection, The Below Requirements Must Be Fulfilled:

a) Enershare Power-Core CANNOT Be Parallel Connected With Enershare Energy-Core ; b) Each Of The Parallel Connected System Must Have The Same Stack Quantity.